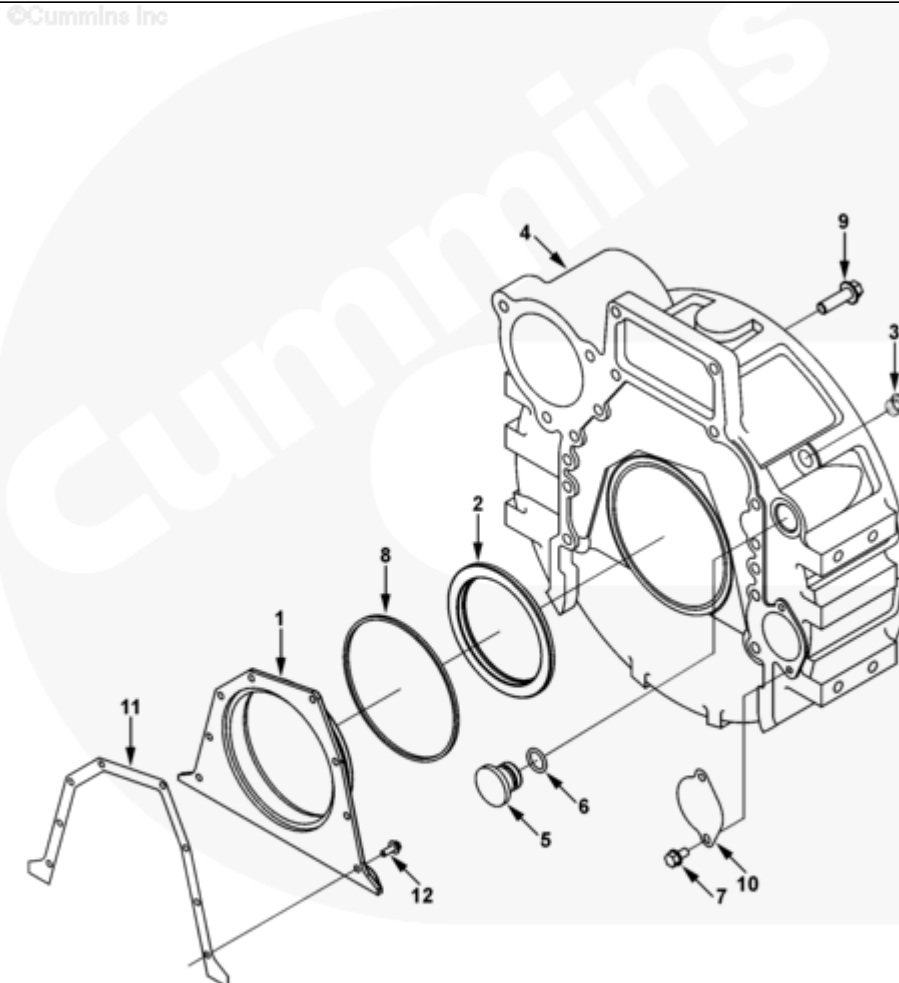




Parts Catalog - Option Detail

Electronic Parts Catalog - Option Detail				
Option	Group	Graphic	Film Card	Date
FH9306-07	16.01	fh960ge	Z	03-DEC-07
Engines	6C8.3, C GAS PLUS CM556, G8.3, G8.3 CM558, GTA8.3 CM558, ISC CM2150, ISC CM554, ISC CM850, ISC8.3 CM2250, ISC8.3 G CM2180 C101, ISL CM2150, ISL CM554, ISL CM850, ISL G CM2180, ISL8.9 CM2150 L110, ISL8.9 CM2880 L112, ISL9 CM2150 SN, ISL9 CM2250, ISL9 CM2350 L101, ISL9 CM2350 L111, ISLE4 CM850, L GAS PLUS CM556, L8.9, L8.9 L121, L8.9G CMOH2.0 L125B, L9 CM2350 L116B, L9 CM2350 L119B, L9 CM2350 L120C, L9 CM2350 L123B, L9.3 L105, L9.5 L117, L9N CM2380 L124B, QSC8.3 CM2250, QSC8.3 CM2880 C102, QSC8.3 CM554, QSC8.3 CM850(CM2850), QSL9 CM2250, QSL9 CM2250 L115, QSL9 CM2350 L102, QSL9 CM2350 L107, QSL9 CM2350 L118, QSL9 CM2350 L122, QSL9 CM554, QSL9 CM850(CM2850), QSL9 G CM558, QSL9 M CM2250 L106, QSL9.3 CM2880 L113			



fh960ge

Cart	Ref No	Part Number	Part Description	Required	Remarks
View My Cart					
		FH9306-07	Flywheel Housing		MR - HOUSING, FLYWHEEL...(More)
					Item Supplied: Flywheel
					Housing
					Flywheel Housing SAE Size: 3
					Clutch Type: Dry
					Starter Bore Position: 49
					Flywheel to Block Mounting
					Pattern: 12 x M12 x 1.75
					Starter Motor Flange SAE
					Type: SAE#3 3 Bolt 120
					Starter Pilot Bore
					Diameter: 92.05
					Starter Bore Horizontal
					Distance: 168.12
					Starter Bore Vertical
					Distance: 146.14
					Starter Bore Center
					Distance: 222.76
					Starter Bore Angle from
					Horizontal Centerline: 40.99
					Angle to Starter Bore
					Mounting Hole Pattern: 30
					Starter Mounting Hole Thread
					Size: M12
					Starter Mounting Face
					Offset: 0
					Material: Aluminum
					Engine Mount Type: Pad

					Mounting Pad Hole
					Description: 6 x M12 x 1.75
					Mounting Pad Top Hole
					Location: 82.56
					Mounting Pad Angle: 0
					Transmission Mounting Hole
					Thread/Count: 12 x M10 x 1.5
					Tachometer Drive Location
					Size: Quad 4, 3/4-16
					Engine Family: C & L Series
<input type="checkbox"/>		3357700	Rear Cover	1	
<input type="checkbox"/>	1	3933384	Rear Cover	1	
<input type="checkbox"/>	2	3970548	Oil Seal	1	
<input type="checkbox"/>	3	3904181	Threaded Plug	1	3/4 - 16 UNF
<input type="checkbox"/>	4	3908799	Flywheel Housing	1	
<input type="checkbox"/>	5	3910248	O-Ring Plug	1	
<input type="checkbox"/>	6	3910260	O-Ring Seal	1	
<input type="checkbox"/>	7	3912072	Self Tapping Metal Screw	2	M8 x 1.25 x 15
<input type="checkbox"/>	8	3912473	Rectangular Ring Seal	1	
<input type="checkbox"/>	9	3920447	Hexagon Flange Head Cap Screw	12	M12 X 1.75 X 40.
<input type="checkbox"/>	10	3925234	Cover Plate	1	
<input type="checkbox"/>	11	3939353	Rear Cover Gasket	1	
<input type="checkbox"/>	12	3991306	Hexagon Flange Head Cap Screw	8	M8 x 1.25 x 15
<input type="checkbox"/>		4089342	Crankshaft Seal Kit	A/R	
		3909409	Seal Installation Tool	1	Sold In Higher Level Assy/Kit
<input type="checkbox"/>		3970548	Oil Seal	1	

<input type="checkbox"/>		4089425	Seal Installation Tool	1	
<input type="checkbox"/>		4940231	Seal Installation Tool	1	

© 2019 Cummins Inc., Box 3005, Columbus, IN 47202-3005 U.S.A.
Terms of Use and Disclaimers | Recommended System Requirements
Need Assistance? Please click on the Contact Us button in the top right corner of any page.